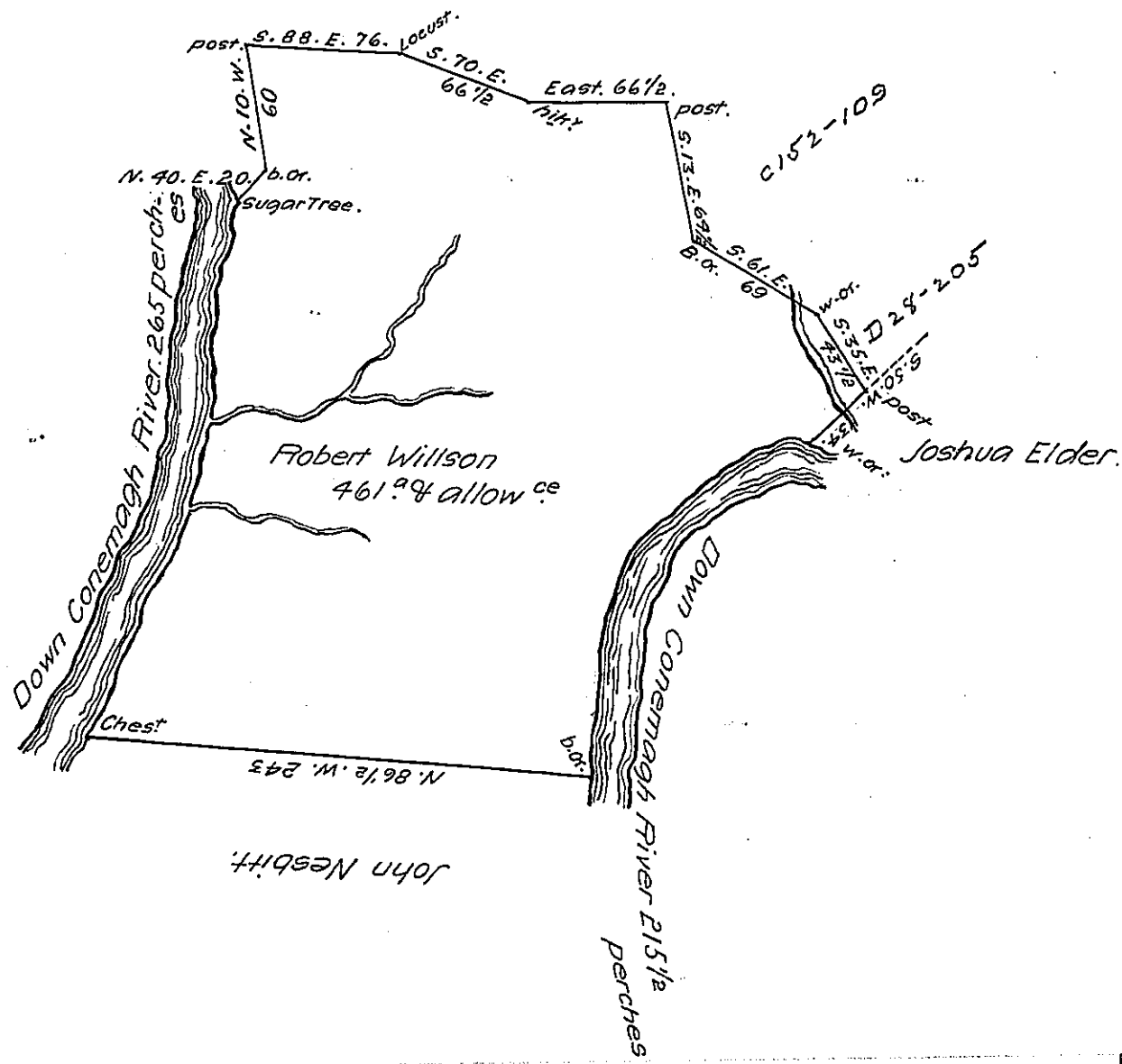


Vacant Land.



Survey'd to Robert Willson on the 3<sup>d</sup> day of October 1786 the above Described Tract of four hundred and Sixty one acres and the allowance of six P<sup>c</sup> Cent. Situate on the North side of Conemaugh River Including an improvement adjoining Land of John Matthews and James M<sup>o</sup> Clain in Westmoreland County by warrant of the 24<sup>th</sup> Day of August 1786.

Joshua Elder D. S.

John Lukens Esq<sup>r</sup> S. Gen<sup>l</sup>

IN TESTIMONY that the above is a copy of the original remaining on file in the Department of Internal Affairs of Pennsylvania, made conformably to an Act of Assembly approved the 16th day of February, 1833, I have hereunto set my Hand and caused the Seal of said Department to be affixed at Harrisburg, this twenty-first day of May 1907.

*Henry Howell*  
Secretary of Internal Affairs.